



WOOLADDICTS

#13 2086.0001 D/F/NL

BY LANGYARNS

CHF 9.90 € 9.95

WOOLLADICTS

EXPRESS YOUR CRAFTING PERSONA!

What character will you embody with your next project? Are you a GREEN GODDESS, taking care of your health and making sure you consume a balanced yarn-diet. Perhaps you're more inclined to be a YARN ARTIST, drawing inspiration from the rich hues and textures bestowed by Mother Nature.

Or consider embracing the essence of a MOTHER OF PEARLS, nurturing, and polishing your skills and projects to perfection.

And for those captivated by a spectrum of colors, you can always unleash your inner RAINBOW COLLECTOR and take your crafting for a ride across all colors of the rainbow...

A world of knitting and crochet awaits you in these pages, inviting you with every stitch to create the vibrant tapestry of your creative expression!



NEW!

GLAMOUR

This yarn isn't for everyone, but if you're someone who appreciates a touch of sparkle in your life, **GLAMOUR** is the perfect match for you.

Whether you're crafting a festive knit or aiming to infuse a bit of glamour into your everyday, **GLAMOUR**'s seamless blend of subtle glitter and texture ensures you can't go wrong.

ITEM# 1151

NEW!

DESIRE

Fulfill your deepest knitting **DESIRE** with this soft ball of mohair. Voluminous, light, and airy, this super bulky yarn allows you to craft the coziest accessories and garments in no time.

Prepare your needles and fashion a sweater that wraps you in the gentle embrace of a perfect hug.

ITEM# 1149



WOOLADDICTS



GREEN GODDES

MACHA - KALE - SPIRULINA



YARN ARTIST

UMBER - OCHER - SIENNA



MOTHER OF PEARLS

SATIN - VELVET - DAMASK



RAINBOW COLLECTOR

MULTICOLOR



FIND A SEED OF PASSION...

GREEN GODDESS





GLORY. MUCH LIKE LEAVES ON A BRANCH OR INTRICATELY TANGLED VINES, THE CABLES ON THIS CARDIGAN BURST FORTH WITH VIBRANT LIFE. WHILE KNITTING THE APPLIED BOTANY CARDIGAN MAY DEMAND SOME SUSTAINED APPLICATION, THE GLORIOUS RESULT IS UNDOUBTEDLY WORTH THE INVESTMENT.

APPLIED BOTANY CARDIGAN PATTERN# 283-001-001



WOOLLADDICTS



... AND NURTURE IT TO FRUITION!



MEMORY. THE RHYTHMIC INTERPLAY OF STITCHES ON THIS TRIANGULAR SHAWL, OFFERS NOT ONLY A VISUAL FEAST BUT ALSO A TACTILE EXPERIENCE. FIELD BOTANICS EXTENDS AN INVITATION TO SYNCHRONIZE THE RHYTHM OF YOUR CRAFTING WITH THE EBB AND FLOW OF NATURE.

FIELD BOTANICS TRIANGULAR SHAWL PATTERN# 283-002-001



GLORY. IF YOUR WARDROBE AND YOUR NEEDLES CRAVE A LITTLE BOOST, LOOK NO FURTHER THAN THIS TEXTURED SCARF ADORNED WITH A FRINGE. THIS HEALTHY SHOT OF GREEN WILL BOOST YOUR KNITTING MOJO TO NEW HEIGHTS, BREATHING FRESH LIFE INTO YOUR CREATIVE ENDEAVORS.

BOTANICAL BOOST SCARF PATTERN# 283-003-001





GLAMOUR. MUCH LIKE A MIRAGE SHIMMERING IN THE MIDDAY HEAT, THIS HAT EMBODIES AN ALLURING PROMISE. IN CONTRAST TO A FATA MORGANA, HOWEVER, YOU CAN TURN THIS PROMISE INTO A TANGIBLE, FINISHED OBJECT.
FATA MORGANA HAT PATTERN# 283-004-001

KNIT your past with **GRATITUDE**
– **PURL** your future with **LOVE**



WOOLADDICTS



GLAMOUR. THIS SWEATER IS A TRUE CHAMELEON. HERE PAIRED EFFORTLESSLY WITH A PAIR OF BROWN PANTS, YET WITH A CHANGE IN STYLING, IT MIGHT JUST TURN INTO THE PERFECT CHRISTMAS SWEATER. AN EVERGREEN THAT WILL NEVER MAKE IT INTO YOUR WARDROBE BECAUSE YOU WON'T BE ABLE TO STOP WEARING IT.

EVERGREEN MIRRAGE SWEATER PATTERN# 283-005-001





FIRE. IN THE HEART OF THE DESERT, A CAPTIVATING PHENOMENON UNFOLDS—AGAINST THE BACKDROP OF AN ARID LANDSCAPE, VIBRANT HUES BURST FORTH AFTER THE RAIN, CREATING A TEMPORARY OASIS OF COLOR AND VITALITY. EMBRACE THE ESSENCE OF THE DESERT BLOOM WITH THIS SWEATER, BLOSSOMING LIKE A BURST OF LIFE IN A GREY WORLD.

DESERT BLOOM SWEATER PATTERN# 283-006-001



WOOLLADDICTS



One **BREATH** at a time – one **STICH** at a time

GLORY. THE STATEMENT COLLAR OF THE HIDDEN OASIS CARDIGAN ENVELOPES YOU LIKE A PROTECTIVE SHELL. BECAUSE SOMETIMES YOU JUST NEED TO HIDE AWAY FROM THE WORLD FOR A LITTLE AND COZY UP WITH YOUR KNITTING. SO, PAUSE, TAKE A BREATH, TAKE A REST, AND REFLECT ON YOUR NEXT KNITTING PROJECT. IT'S IN THE SMALL MOMENTS, THAT ONE CAN FIND A HIDDEN OASIS IN LIFE.

HIDDEN OASIS CARDIGAN PATTERN# 283-007-001



WOOLADDICTS



Embrace the **GREEN** life...



WOOLADDICTS

MEMORY. IN AN ARID LANDSCAPE, WHERE LIFE ENDURES THROUGH RESILIENCE, A SYMBOLIC REVIVAL UNFOLDS THROUGH THE FIBER ARTS. IN THE DESERT REVIVAL VEST, EACH STITCH BECOMES A METAPHORICAL REPRESENTATION OF LIFE. THE VEST SERVES AS A LIVING CANVAS, CAPTURING THE ESSENCE OF TENACITY AND ENDURANCE AMID THE HARSH LANDSCAPE.

DESERT REVIVAL GILET PATTERN# 283-008-001

DESIRE. LUSH OASIS IS A WEARABLE SANCTUARY ENVELOPING YOU IN COZY COMFORT. THE OVERSIZED SILHOUETTE OFFERS A RELAXED FIT, AKIN TO THE ABUNDANCE OF NATURE FLOURISHING IN AN OASIS. IF YOU THIRST FOR A QUICK PROJECT WITH BIG NEEDLES, LOOK NO FURTHER.

LUSH OASIS SWEATER PATTERN# 283-009-001





HONOR. THE WILDERNESS QUEST CARDIGAN ENCAPSULATES SIMPLICITY AND WARMTH, MAKING IT AN IDEAL COMPANION FOR YOUR BIG AND SMALL ADVENTURES. ADDING A PRACTICAL TOUCH, THE CARDIGAN FEATURES POCKETS, PERFECT FOR TUCKING AWAY SMALL TREASURES OR OFFERING A COZY REFUGE FOR YOUR CHILLY HANDS.
WILDERNESS QUEST CARDIGAN PATTERN# 283-010-001

...follow the **GREEN** thread
- it may lead you to unexpected places.



DESIRE. THIS SLIPOVER, APTLY NAMED EVERGREEN TONIC, SERVES AS A WELLSPRING OF ENDURING INSPIRATION. EACH ROW, WHILE DISTINCT ALSO SLOTS SEAMLESSLY INTO THE FABRIC OF THE ONES THAT CAME BEFORE. WITH EVERY NEW STITCH, IT CAPTURES THE ESSENCE OF FRESHNESS AND REJUVENATION ANEW.

EVERGREEN TONIC SLIPOVER PATTERN# 283-011-001





HONOR. SOMETIMES, ALL YOU NEED IS TO DISTILL YOUR OUTFIT DOWN TO A STATEMENT SWEATER AND A COZY HAT. REFRESHING BREW BLENDS VARIOUS SHADES OF GREENS, KEEPING YOUR MIND SHARP IN KNITTING AND YOUR EARS WARM IN WEARING IT. MEANWHILE, EMERALD ELIXIR ENSURES YOUR KNITTING STAYS ENGAGING, TRANSITIONING COLORS EVER SO OFTEN FOR A VIBRANT STRIPE LOOK.

REFRESHING BREW HAT PATTERN# 283-012-001

EMERALD ELIXIR SWEATER PATTERN# 283-013-001



MEMORY. THE COLOR GREEN STANDS FOR HEALTH AND WELL-BEING. IT IS A CALMING COLOR THAT CAN PROMOTE RELAXATION AND STRESS RELIEF. GREEN HORIZON OFFERS YOU A CANVAS OF ENDLESS POSSIBILITIES, AND THE EXPANSIVE POTENTIAL THAT LIES AHEAD. WHILE GREENOVATION KEEPS YOU CONCENTRATED BUT RELAXED WITH AN UNUSUAL STITCH PATTERN.

GREEN HORIZON HAT PATTERN# 283-014-001
GREENOVATION SCARF PATTERN# 283-015-001

WOOLLADDICTS



YARN ARTIST

HONOR. PACHAMAMA, A CHERISHED GODDESS IN ANDEAN AND INCAN MYTHOLOGY, EMBODIES THE SPIRIT OF MOTHER EARTH. WRAP YOURSELF IN THE WARMTH AND EMBRACE OF THIS INVITING SWEATER, CONNECTING WITH YOUR NURTURING ESSENCE.

PACHAMAMA SWEATER PATTERN# 283-016-001



Knit natures **PALETTE**...





... into your **LIFE'S FABRIC**



WOOLADDICTS

GLAMOUR. MUCH LIKE THE LAYERS OF SEDIMENTS, THE VARIED TEXTURES AND COLORS OF GLAMOUR INFUSE THIS VEST WITH DEPTH AND A SENSE OF HISTORY. AS YOU KNIT, CONSIDER THE MEMORIES YOU WORK INTO EACH STITCH - WHAT PERSONAL STORY IS TAKING SHAPE IN THIS GARMENT?

EARTHY HUES SLIPOVER PATTERN# 283-017-001



... unleash your inner **ARTIST!**



GLAMOUR. FIFTY SHADES OF RED AND BROWN INTERTWINE IN THIS EXQUISITE SCARF, ALLOWING THEM TO BLEND AND PLAY TOGETHER, AKIN TO PIGMENTS ON AN ARTIST'S PALETTE. WITNESS THE HARMONIOUS FUSION OF COLORS, EACH HUE CONTRIBUTING TO A MASTERPIECE TO DRAPED AROUND YOUR NECK.

50 SHADES SCARF PATTERN# 283-018-001



GLAMOUR. HUMBLE AND DOWN-TO-EARTH, THIS SWEATER, ALLOWS THE YARN TO TAKE CENTER STAGE. IT SHOWCASES BEAUTIFUL SHADES REMINISCENT OF THE FIERY CLAY AND EARTHY TONES OF GAIA.

SHADES OF GAIA CARDIGAN PATTERN# 283-019-001





WOOLLADICTS



Touch of **SPARKEL**

GLAMOUR. COLORS ARE SHAPED BY THEIR HUE, TINT, TONE, AND SHADE; MUCH LIKE THE VARIANTS OF BROWNS AND ORANGES IN THIS COZY HAT. WHILE KNITTING, TAKE TIME TO REFLECT ON THE HUES THAT DEFINE YOU – WHAT UNIQUE SHADE RESONATES WITH YOUR ESSENCE?

HUE OF YOU HAT PATTERN # 283-020-001

HONOR. WITH ITS INTRICATE ALLOVER CABLES AND RELAXED FIT, COMPLETING THIS SWEATER MAY REQUIRE SOME DEDICATED ATTENTION AND CARE. HOWEVER, WITH THE APPROPRIATE ENCOURAGEMENT AND NURTURING, IT IS BOUND TO TRANSFORM INTO A CHERISHED FAVORITE FOR EVERY OCCASION.

MOTHER NURTURE SWEATER PATTERN# 283-021-001





DESIRE. GAIJA'S EMBRACE IS THE EPITOME OF COMFORT AND WARMTH IN THE FORM OF A FLUFFY, COZY SWEATER. CRAFTED WITH THE SOFTEST MOHAIR, IT ENVELOPS YOU IN A GENTLE EMBRACE, PROVIDING A SENSE OF SECURITY AND TRANQUILITY. THE LOOSE FIT AND EARTHY COLOR MAKE IT NOT JUST A PIECE OF CLOTHING BUT A SANCTUARY.

GAIJA'S EMBRACE SWEATER PATTERN# 283-022-001





MEMORY. THE VERTICAL TEXTURE STRIPES MIRRORING THE RICHNESS OF SOIL NURTURED BY VOLCANIC MINERALS LEND A MODERN TOUCH TO THE LAVA GARDEN CARDIGAN. THE DEEP RED YARN CHOSEN NOT ONLY ECHOES THE FIERY HUES OF VOLCANIC ACTIVITY BUT ALSO SYMBOLIZES THE SUMPTUOUS GARDENS THAT FLOURISH IN THE NUTRIENT-RICH EARTH. RESULTING IN A GARMENT THAT BLOSSOMS WITH THE VIBRANT ALLURE OF NATURE'S MOST FERTILE LANDSCAPES.

LAVA GARDEN CARDIGAN PATTERN# 283-023-001

Mix **STITCHES** - like a painter combining **PIGMENTS**



YARN is my **SANCTUARY**



HONOR. THIS TEXTURED VEST IS A MEDITATIVE KNITTING JOURNEY. INTRICATELY DESIGNED WITH A BLEND OF KNIT AND PURL STITCHES, IT CREATES A TAPESTRY OF TACTILE RICHNESS THAT MIRRORS THE LAYERS OF CALM FOUND IN A SERENE SANCTUARY. EMBARK ON THIS PROJECT TO DISCOVER YOUR OWN, PERSONAL KNITTING SANCTUARY.

DEEP SANCTUARY GILET PATTERN# 283-024-001



GLORY. A DOUBLE-BREADED JACKET KNIT IN SQUISHY GARTER STITCH, FLAMING HUE ENVELOPES YOU WITH WARMTH AND STYLE. THE RHYTHMIC UNDULATION OF THE GARTER STITCH, REMINISCENT OF DANCING FLAMES, NOT ONLY SPEAKS TO BUT ALSO IGNITES THE INNER FIRE OF YOUR CREATIVITY, TRANSFORMING EACH STITCH INTO A VIBRANT EXPRESSION AS YOU BREATHE LIFE INTO THE EMBERS OF THIS PROJECT.

FLAMING HUE CARDIGAN PATTERN # 283-025-001





Leave a trail of **WARMTH!**



WOOLADDICTS

FIRE. THROUGH A SKILLFUL ARRANGEMENT OF KNIT AND PURL STITCHES, A CAPTIVATING TRAIL UNFOLDS ALONG THE ENTIRE LENGTH OF THE SCARF. ELEVATED BY THE USE OF OUR MOST SUBSTANTIAL YARN, FIRE, THE PIGMENT TRAIL SCARF KEEPS YOU NICE AND WARM, WHILE ALSO LOOKING REALLY FASHIONABLE WITH ANY WINTER OUTFIT.

PIGMENT TRAIL SCARF PATTERN# 283-026-001



MEMORY. FIRE. FOR ULTIMATE WARMTH AND STYLE THIS WINTER, YOU HAVE TWO FIERY OPTIONS TO KEEP YOUR HEAD (AND HEART) WARM. LAVA FUSION OFFERS A CHIC BEANIE STYLE WITH A DISTINCTIVE TWO-COLOR DESIGN AND A WIDE BRIM, WHILE FIRED CLAY PROVIDES THE CLASSIC HAND-KNIT AESTHETIC, FEATURING OVERSIZED YARN AND A PLAYFUL POM-POM FOR A TOUCH OF COMFORT AND FLAIR.

LAVA FUSION MEMORY HAT PATTERN# 283-027-001

FIRED CLAY FIRE HAT PATTERN# 283-028-001

MOTHER OF PEARLS



WOOLADDICTS

WOOLADDICTS



MEMORY. MUCH LIKE TENDING TO A DELICATE ROSE DEMANDS SKILL AND CARE, THIS PATTERN BECKONS KNITTERS TO EMBARK ON A REWARDING JOURNEY. DELVE INTO THE CHALLENGE OF CRAFTING INTRICATE CABLES AND AN ENCHANTING ALL-OVER TEXTURE, WHERE THE PROCESS BECOMES AS GRATIFYING AS THE FINISHED MASTERPIECE.

DAMASK ROSE CARDIGAN PATTERN# 283-029-001



MEMORY. INDULGE IN THE RICH ALLURE OF THE COMPLEXE FLAVOUR SWEATER, WHERE THE DEEP, PURPLE HUE OF THE YARN MIRRORS THE SOPHISTICATED TONES OF A WELL-AGED WINE. JUST LIKE THE INTRICATE FLAVORS THAT DEVELOP OVER TIME IN A FINE VINTAGE, THIS SWEATER'S COMPLEXITY IS PART OF ITS ESSENCE, CREATING A GARMENT THAT MATURES WITH EACH STITCH.

COMPLEX FLAVOUR SWEATER PATTERN# 283-030-001



GLORY. INDULGE IN THE UNMATCHED ELEGANCE OF A COORDINATED HAT AND SCARF DUO WITH VELVETEEN AND CRUSHED VELVET. THE STITCH PATTERN AND VOLUMINOUS YARN COME TOGETHER, CREATING A VELVETY TEXTURE THAT IS BOTH SUMPTUOUS AND REFINED, TRANSFORMING THESE ACCESSORIES INTO A TACTILE DELIGHT, REMINISCENT OF THE LUXURIOUS TOUCH OF VELVET.

VELVETEEN HAT PATTERN# 283-031-001

CRUSHED VELVET SCARF PATTERN# 283-032-001





MEMORY. TOPDOWN LET YOUR LOVE FOR KNITTING AND YARN ENTWINE WITH YOUR LIFE. THIS CARDIGAN IS KNIT FROM THE TOP DOWN, ELIMINATING THE NEED TO UNTANGLE ENDS WHEN ASSEMBLING THE PIECES. AS YOU KNIT, YOU CAN EFFORTLESSLY TRY ON THE CARDIGAN, ENSURING THE I-CORD CLOSURE FALLS PRECISELY INTO PLACE.

ENTWINED CARDIGAN PATTERN# 283-033-001



Let your **CREATIVITY**
and **CRAFT** entwine!



WOOLLADICTS



HONOR. THIS DRESS FEELS LIKE THE WHISPER OF A SOFT EMBRACE ON YOUR SKIN. ONCE YOU PUT IT ON, YOU'LL WANT TO LIVE IN IT FOREVER. WHETHER PAIRED WITH SNEAKERS AND A CAP FOR A CASUAL ALLURE OR ELEVATED WITH HEELS AND JEWELRY FOR AN ELEGANT TOUCH, THIS DRESS SEAMLESSLY TRANSITIONS FROM COMFORT TO CHIC (OR BOTH AT ONCE).

SOFT EMBRACE DRESS PATTERN# 283-034-001

WHEN IN DOUBT...KNIT ANOTHER ROW!



GLORY. A SUN-KISSED FACE AND A SWEATER THE DEEP COLOR OF SWEET, RIPE GRAPES – WHAT MORE COULD ONE DESIRE? EVEN IN THE DEPTHS OF WINTER, THIS PIECE WILL EVOKE MEMORIES OF SUNNY, PLENTIFUL FALL DAYS, WRAPPING YOU IN THE WARMTH OF THOSE RADIANT TIMES.

GRAPE-KISSED SWEATER PATTERN# 283-035-001





MEMORY. THIS ULTRA-CROPPED SWEATER EMPOWERS YOU WITH THE FREEDOM TO MOVE AND EMBRACE LIFE ON YOUR OWN TERMS. LIKE WILD ROSES, IT REFUSES TO BE TAMED, LETTING YOU EXPRESS YOUR UNTAMED SPIRIT WITH STYLE.

WILD ROSE SHORT SWEATER PATTERN# 283-036-001



MEMORY. SIMILAR TO THE POTENTIAL HELD WITHIN A FLOWER BUD (OR A BALL OF YARN), THE ROSEBUD SCARF INVITES YOU TO NURTURE ITS GROWTH ONE STITCH AT A TIME. LET'S CULTIVATE ITS BEAUTY TOGETHER, UNFOLDING ITS STORY STITCH BY STITCH.

ROSEBUD SCARF PATTERN# 283-037-001





GLAMOUR. THE STITCHES ON THE PEARL-KISSED HEADBAND AND THE SHIMMERING PEARL COLLAR LINE UP BEAUTIFULLY, LIKE PEARLS ON A STRING. JUST LIKE A PEARL THAT TAKES TIME TO FORM, TRUE GLAMOUR IS CULTIVATED STITCH BY STITCH.

PEARL-KISSED HEADBAND PATTERN# 283-038-001

SHIMMERING PEARL COLLAR PATTERN# 283-039-001





Be as unique as a **PEARL!**



GLAMOUR. GLAMOURIZE YOUR WARDROBE - YOU'LL RADIATE LIKE A BEAUTIFUL AND UNIQUE PEARL IN THIS OPEN SIDED SLIPOVER WITH TIES. YOU'LL HAVE TO DO THE KNITTING YOURSELF, BUT THE COORDINATING COLORS AND UNIQUE TEXTURE OF FLUFFY MOHAIR AND PEARLESCENT SHIMMER COME CURTESY OF THE YARN.

PEARLESCENT SLIPOVER PATTERN# 283-040-001





DESIRE. WITH ITS VELVETY TEXTURE AND DESIGN, THE VELVET TOUCH SWEATER PROMISES BOTH COMFORT AND A STANDOUT LOOK FOR ANY OCCASION. THIS FLUFFY MOHAIR-MASTERPIECE NOT ONLY ENVELOPS YOU IN WARMTH BUT ALSO FEATURES A STATEMENT POCKET, ADDING A TOUCH OF FLAIR.

VELVET TOUCH SWEATER PATTERN# 283-041-001



**PEARLESCENT DREAMS,
A YARN-SPUN SEA,
A MOTHER'S LOVE,
A TAPESTRY,
FINGERS KNIT,
A GENTLE TWIRL,
MOTHER OF PEARL,
IN YARN IT SWIRLS.**

WOOLADDICTS

WOOLADDICTS

RAINBOW COLLECTOR



0012

0010

0005

0005

0006

0013

0007

0009

0011



MYSTERY. THE NORTHERN LIGHT PONCHO-SWEATER BOASTS A DISTINCTIVE CONSTRUCTION AND VIBRANT STRIPES THAT EVOKE THE ENCHANTING HUES OF THE AURORA. ITS EFFORTLESS STYLE MAKES IT THE IDEAL PIECE TO THROW ON WHEN STEPPING OUTSIDE TO WITNESS ANY CELESTIAL SPECTACLE THE NIGHT SKY HAS TO OFFER.

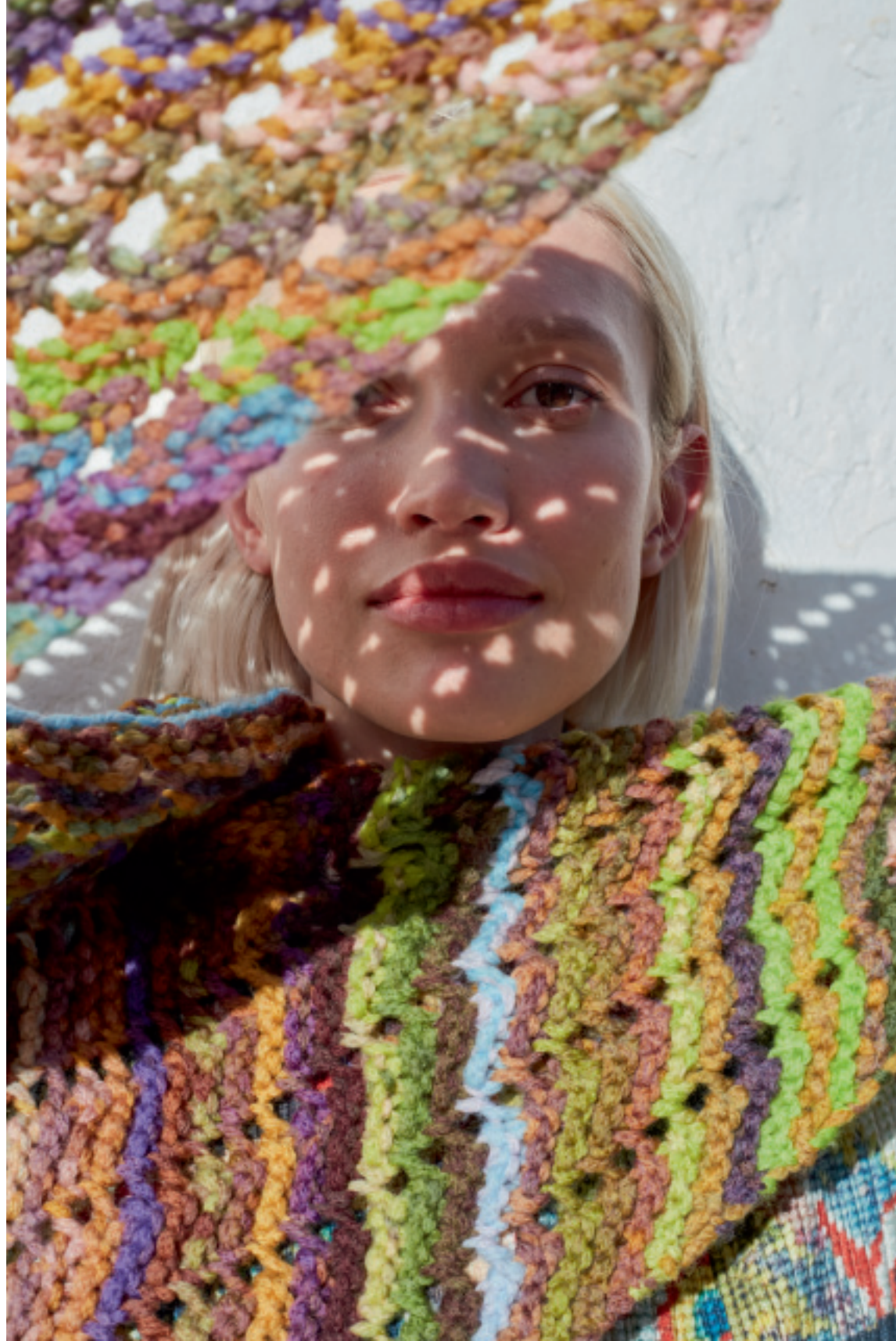
NORTHERN LIGHTS | PONCHO SWEATER | PATTERN# 283-042-001

WOOLADDICTS

WOOLADDICTS

MYSTERY. CUDDLE UP UNDER THE OPEN SKY - THE INFINITE SKY TRIANGULAR SHAWL ENVELOPS YOU IN ITS GENEROUS SIZE, OFFERING A LUXURIOUS AND COMFORTABLE DRAPE. WHILE THE FINE STRIPES AND SELF-PATTERNING OF THE YARN CREATE A CAPTIVATING VISUAL TAPESTRY, RESEMBLING THE EVER-EXPANSIVE BEAUTY OF THE SKY.

INFINITE SKY TRIANGULAR SHAWL PATTERN# 283-043-001





Don't forget you **RAINBOW** tinted glasses!



WOOLLADDICTS

MYSTERY. ENSURE YOUR HEAD STAYS COMFORTABLY WARM, AS THOUGH BASKING IN THE GLOW OF A BEAUTIFUL SUNSHINE, WITH THE RADIANT SUN BALACLAVA. EXTEND THE WARMTH TO YOUR HANDS BY MATCHING IT WITH THE PRISMATIC SHAKERS MITTENS.

RADIANT SUN BALACLAVA PATTERN# 283-044-001

PRISMATIC SHAKERS GLOVES PATTERN# 283-045-001



explore the **MYSTERY...**



MYSTERY. INFUSED WITH THE ALLURE OF SOLAR MYTHOLOGY, THE SOLAR DANCE SWEATER ENCAPSULATES THE SPIRIT OF A CELESTIAL DANCE, ENVELOPING YOU IN AN AURA AS RADIANT AND CAPTIVATING AS THE SUN'S GRACEFUL MOVEMENTS. WITH EACH STITCH YOU CAPTURE THE LIGHT OF THE SUN, ENSURING THAT THIS LONG SWEATER BECOMES A LUMINOUS ADDITION TO YOUR WARDROBE.

SOLAR DANCE SWEATER PATTERN# 283-046-001



...over the **RAINBOW!**

MYSTERY. THIS CARDIGAN HARMONIOUSLY BLENDS A VIBRANT SPECTRUM OF COLORS, CREATING A VISUAL SYMPHONY. WITH ITS KALEIDOSCOPIC HUES, SPECTRAL SYMPHONY IS NOT JUST A GARMENT BUT A CELEBRATION OF DIVERSITY, MAKING IT A FITTING CHOICE FOR INDIVIDUALS ACROSS A WIDE SPECTRUM OF STYLES AND PERSONALITIES.

SPECTRAL SYMPHONY

CARDIGAN PATTERN# 283-047-001

WOOLADDICTS

MYSTERY. WHETHER DRAPED AROUND YOUR NECK OR TIED INTO A CHIC HAIR SCARF, CHROMA FUSION ADDS A PLAYFUL AND COLORFUL DIMENSION TO YOUR FASHION REPERTOIRE, EFFORTLESSLY ENHANCING YOUR OVERALL LOOK.

CHROMA FUSION SHAWL PATTERN# 283-048-001





MYSTERY. THE COLORS YOU CHOOSE TO ADORN YOURSELF WITH HAVE A PROFOUND IMPACT ON YOUR THOUGHTS AND EMOTIONS. REST ASSURED, WITH THIS VIBRANT TECHNICAL SWEATER, YOUR LIFE AND YOUR KNITTING ARE DESTINED TO BE ANYTHING BUT DULL.

TECHNICAL SWEATER PATTERN # 283-049-001

LIFE is more FUN in TECHNICAL!



WOOLLADDICTS

WOOLADDICTS



MYSTERY. THESE SOCKS NOT ONLY KEEP YOUR FEET COZY BUT ALSO ADD A KALEIDOSCOPIC TOUCH TO YOUR ENSEMBLE, MAKING EVERY STEP A COLORFUL JOURNEY. COMPLETE THE OUTFIT WITH THE MATCHING MITTENS, PRISMATIC SHAKERS, FOR A COORDINATED BURST OF CHROMATIC WARMTH THAT MOVES WITH YOU THROUGH ALL THE SHADES OF STYLE.

PRISMATIC MOVERS socks PATTERN# 283-050-001

WOOLLADICTS

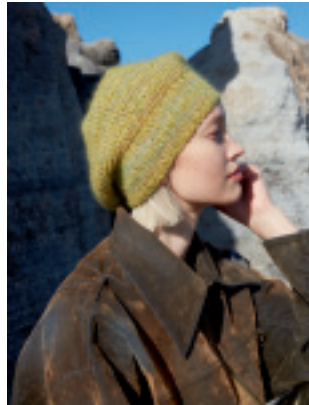


MYSTERY. WHETHER WORN AS A HAT, COWL, OR HOOD, THIS KNITTED CREATION SEAMLESSLY ADAPTS TO THE CIRCUMSTANCES. LIKE THE EVER-SHIFTING PATTERNS IN A KALEIDOSCOPE, IT TRANSFORMS WITH THE FLICK OF THE HAND.

KALEIDOSCOPE LOOP PATTERN# 283-051-001

GLAMOUR

36% polyester metallisé, 30% polyamid,
25% mohair superkid, 9% wool
200m/50g NN 5.5-6



FATA MORGANA



EVERGREEN MIRRAGE



EARTHY HUES



50 SHADES



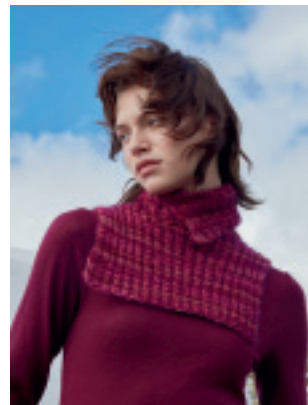
SHADES OF GAIA



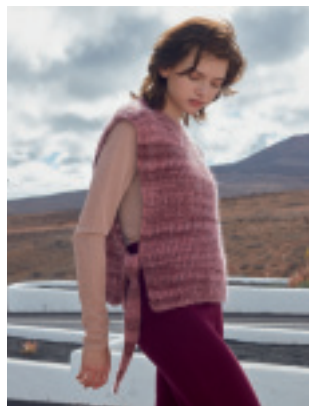
HUE OF YOU



PEARL-KISSED



SHIMMERING PEARL



PEARLESCENT

DESIRE

82% mohair superkid, 15% virgin wool, 3% polyamid
95m/50g NN 6-7



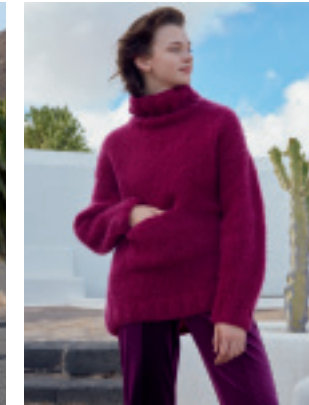
LUSH OASIS



EVERGREEN TONIC



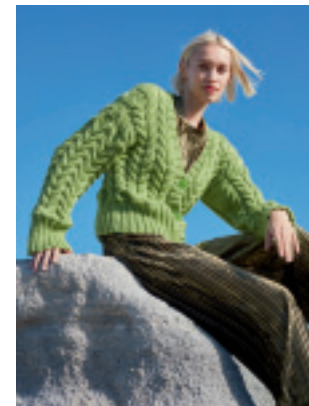
GAIA'S EMBRACE



VELVET TOUCH

GLORY

100% extra fine merino wool superwash 70m/50g NN 7-8



APPLIED BOTANY



BOTANICAL BOOST



HIDDEN OASIS



FLAMING HUE



VELVETEEN



CRUSHED VELVET



GRAPE-KISSED

HONOR

50% suri alpaca, 50% merino extra fine 100m/50g NN 5.5-6



WILDERNESS QUEST



REFRESHING BREW



EMERALD ELIXIR



PACHAMAMA



MOTHER NURTURE



DEEP SANCTUARY



SOFT EMBRACE

FIRE

98% virgin wool, 2% polyester 75m/100g NN 9



DESERT BLOOM



PIGMENT TRAIL



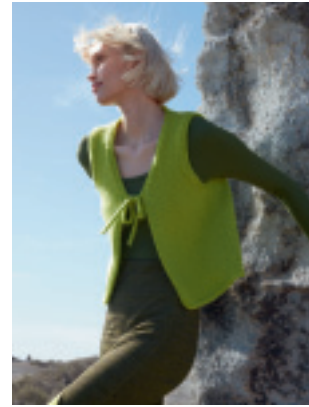
FIRED CLAY

MEMORY

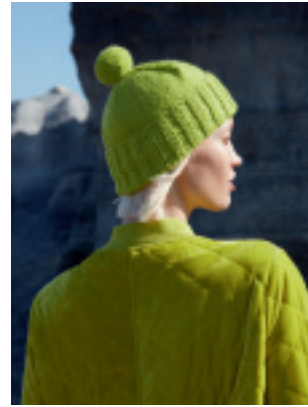
88% virgin wool, 12% nylon 100m/50g NN 6-7



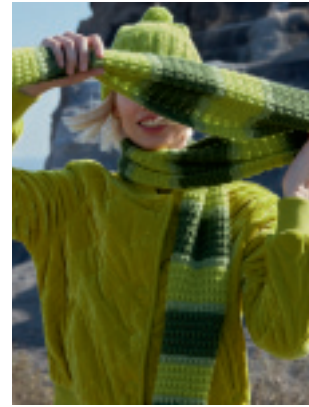
FIELD BOTANICS



DESERT REVIVAL



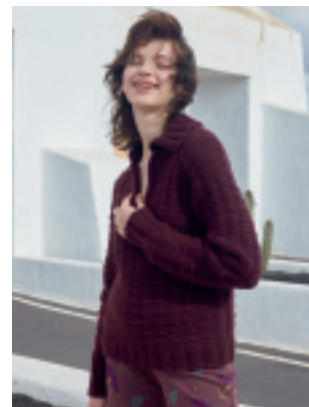
GREEN HORIZON



GREENOVATION



DAMASK ROSE



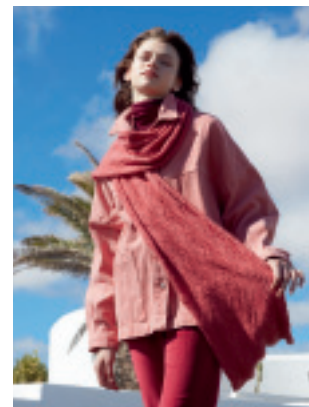
COMPLEX FLAVOUR



ENTWINED



WILD ROSE



ROSEBUD



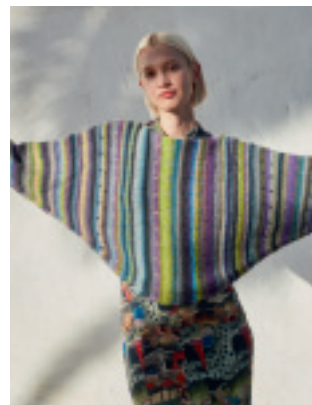
LAVA GARDEN



LAVA FUSION

MYSTERY

92% virgin wool, 8% nylon 110m/50g NN 8-9



NORTHERN LIGHTS



INFINITE SKY



RADIANT SUN



PRISMATIC SHAKERS



SOLAR DANCE



SPECTRAL SYMPHONY



CHROMA FUSION



TECHNICOLOR



PRISMATIC MOVERS



KALEIDOSCOPE



**punto
79**

MOVE

WOOLADDICTS
BY LANGYARNS

2579.0001
CHF 5.90 / € 5.95
www.wooladdicts.com

PUNTO 79 MOVE

NOW AVAILABLE IN A 4-PLY, 6-PLY, AND 8-PLY VERSION, MOVE IS FOR MORE THAN JUST SOCKS. FROM COZY SWEATERS AND STYLISH CARDIGANS TO TRENDY HATS AND ELEGANT SHAWLS, THIS VERSATILE YARN INVITES YOU TO EXPLORE THE WORLD OF CREATIVE POSSIBILITIES. GET YOUR NEEDLES MOVING WITH ONE OF THE 17 COLORFUL PATTERNS IN THIS PUBLICATION.



LANG
Y A R N S

Quality since 1867

